

The background of the slide is a dark green color with a pattern of lighter green, stylized leaves. The leaves are of various shapes and sizes, some with prominent veins, creating a natural, forest-like aesthetic.

Auburn University Southern Forest Nursery Management Cooperative

2005 Forest Nursery Management
Shortcourse

August 30, 2005

The background of the slide is a dark green color with a pattern of lighter green, stylized leaf shapes. The leaves are arranged in a way that they appear to be growing from the bottom and spreading outwards. The word "Regulations" is centered in the middle of the slide in a large, bold, yellow font.

Regulations

ACRONYMS

OSHA

USDA

DOL

CERCLA

FMIA

FLSA

FIFRA

FQPA

EPA

WPS

MSDS

INS

PPE

APHIS

MSPA

CAA

CWA

Federal Insecticide, Fungicide and Rodenticide Act

- The basic legal framework for the labeling, distribution, sale and application of pesticides
- Requires registration of producers
- Enforces the label contents
- Requires that a certified applicator be present during the use of a restricted use pesticide

Federal Insecticide, Fungicide and Rodenticide Act

- Where a state has a federally approved pesticide program, the state is the primary enforcement authority,
- Ultimate enforcement authority lies with the EPA because EPA can take over a state's enforcement authority if the state's programs are not adequately enforced.

Federal Insecticide, Fungicide and Rodenticide Act as amended by the Food Quality Protection Act of 1996

The changes included:

- Mandates a single, health-based standard for all pesticides in all foods
- Provides special protections for infants and children (10 x safety factor)
- Expedites approval of safer pesticides
- Creates incentives for the development and maintenance of effective crop protection tools
- Requires periodic re-evaluation of pesticide registrations and tolerances

Federal Insecticide, Fungicide and Rodenticide Act as amended by the Food Quality Protection Act of 1996

Requires periodic re-evaluation of pesticide registrations and tolerances

- Law requires that all pesticides have a reassessment within 10 years
- To be completed by August 2006
- After this they must be updated every 15 years.
- Voluntary cancellations

Worker Protection Standard

A Federal Regulation issued in 1992 with the intention of protecting agricultural workers and pesticide handlers against possible harmful effects of agricultural pesticides

- Began with concerns for vegetable pickers
- Strongly supported by farm worker unions
- Like FIFRA, ultimate enforcement lies with EPA

Worker Protection Standard

Who must comply?

- You own or manage a farm, forest, nursery or greenhouse where pesticides are used in the production of agricultural plants
- You hire or contract for the services of agricultural workers
- You operate a business in which you (or people you employ) apply pesticides
- You operate a business in which you (or people you employ) perform tasks as a crop advisor

Worker Protection Standard

What pesticides are covered?

READ THE LABEL

Agricultural Use Requirements:

Use this product only in accordance with its labeling and with the Worker Protection Standard, 40 CFR part 170. This Standard contains requirements for the protection of agricultural workers on farms, forests, nurseries, and greenhouses, and handlers of agricultural pesticides. It contains requirements for training, decontamination, notification, and emergency assistance. It also contains specific instructions and exceptions pertaining to the statements on this label about personal protective equipment (PPE) and restricted-entry interval. The requirements in this box only apply to uses of this product that are covered by the Worker Protection Standard.

Do not enter or allow worker entry into treated areas during the restricted entry interval (REI) of 24 hours.

PPE required for early entry to treated areas that is permitted under the Worker Protection Standard and that involves contact with anything that has been treated, such as plants, soil or water, is:

- Protective eyewear
- Coveralls over long-sleeved shirt and long pants
- Chemical-resistant footwear plus socks
- Chemical-resistant gloves (such as Nitrile, Butyl, Neoprene, and/or Barrier Laminate)
- Chemical-resistant headgear for overhead exposure

Non-Agricultural Use Requirements:

The requirements in this box apply to uses of this product that are not within the scope of the Worker Protection Standard for agricultural pesticides (40 CFR Part 170). The WPS applies when this product is used to produce agricultural plants on farms, forests, nurseries or greenhouses.

Keep unprotected persons out of treated area until sprays have dried.

Worker Protection Standard

Who does it cover?

- Agricultural Workers – Anyone who is employed (including self employed) for any type of compensation while doing tasks related to the production of plants
- Pesticide Handlers – Anyone who is employed (including self employed) and receives compensation for using pesticides in the production of plants

Worker Protection Standard

Employers are responsible for making sure that workers and handlers receive the protections required by the pesticide labeling and the WPS

Non compliance to the WPS is the same thing as using a pesticide in a manner which is inconsistent with its labeling

State inspectors are checking for WPS compliance

Worker Protection Standard

Requires you to provide to your employees

- Information
- Protection
- Mitigation

You are not required to provide this information to the public or your neighbors

Worker Protection Standard

INFORMATION

Three ways to inform workers and handlers

- Signs
- Verbal
- Central Location

Some pesticides require double notification

Which is best?

DANGER **PELIGRO**
PESTICIDES **PESTICIDAS**



KEEP OUT
NO ENTRE

THIS PROPERTY TREATED WITH

on _____
and all persons are warned to stay out
until _____.

PROTECT YOURSELF FROM PESTICIDES PROTEJASE DE LOS PESTICIDAS



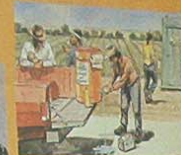
Pesticides may be on plants and soil, in irrigation water, or drifting from nearby applications.

Los pesticidas pueden estar en las plantas o en el suelo, en el agua de riego, o arrastrados por el viento cuando se aplican cerca.



There are federal rules for product workers. These rules require that your employer train you in pesticide safety.

Existen reglas federales para los trabajadores de pesticidas. Las reglas exigen que se pauten la primera responsabilidad de seguridad con los pesticidas.



Wash your hands and face before eating, drinking, smoking, or using the toilet. (Lave las manos y la cara antes de comer, beber, fumar o usar el baño.)

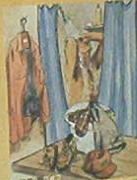
IN AN EMERGENCY EN UNA EMERGENCIA



If pesticides get on your skin, wash them off right away with clean water. (Si pesticidas se pegan en tu piel, lávalos inmediatamente con agua limpia.)



Wash your face, neck, and arms with soap and water. (Lave tu cara, cuello y brazos con agua y jabón.)



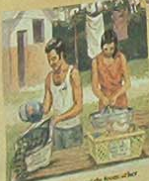
Wash your hands and face before eating, drinking, smoking, or using the toilet. (Lave las manos y la cara antes de comer, beber, fumar o usar el baño.)



These workers should wear hats and change into clean clothes. (Estos trabajadores deben usar sombreros y cambiarse a ropa limpia.)



These workers should wear hats and change into clean clothes. (Estos trabajadores deben usar sombreros y cambiarse a ropa limpia.)



Wash your hands and face before eating, drinking, smoking, or using the toilet. (Lave las manos y la cara antes de comer, beber, fumar o usar el baño.)

Wash your hands and face before eating, drinking, smoking, or using the toilet. (Lave las manos y la cara antes de comer, beber, fumar o usar el baño.)

Worker Protection Standard Central Area Information La Protección del trabajador Información Central Uniforme de Área

It is the responsibility of all employers and contractors to check this board before beginning manual work in any field.

Es la responsabilidad de todos empleadores y contratistas de verificar esta tabla antes de comenzar el trabajo de manual en cualquier campo.

Nearest Emergency Medical Facility is located at:

Name EVANS MEMORIAL HOSPITAL

Street 200 N. RIVER ST.

City CLAXTON

Phone 339-2611

SEPA
United States Environmental
Protection Agency

The nearest emergency medical facility (hospital) is:
El centro de emergencia médica (hospital) más cercano es:
Name _____
Address _____
City _____
State _____
Zip _____

For more information on pesticide safety call:
Para más información sobre pesticidas llame:
• 1-800-451-2276 or
• State Land Agency or Authority
Agencia o autoridad estatal pertinente
MS _____
Order No. P928 ... price is \$1.50 ea.

PESTICIDE RECORD FORM

1. APPLICATOR INFORMATION

Applicators Name: _____ License #: _____

Date of Application: _____

Time Started: _____

Time Stopped: _____

2. EQUIPMENT USED

Sprayer Type: _____

Tractor #: _____

Gear Combination: _____

No. of Seconds to go 100 feet: _____

RPM: _____

PSI: _____ # of Nozzles: _____

Swath Width: _____

Nozzle Type: _____

Volume/Nozzle: _____

3. LOCATION

Blocks and/or Beds Sprayed: _____

Total Acres Treated: _____

County: Tattnall

State: Georgia

4. PESTICIDE INFORMATION

Name of Pesticide Used: _____

Rate Applied (*quantity/acre*): _____ Total Quantity Applied: _____

Name and Rate of any Additive used in a Water Carrier: (*i.e. - surfactant, crop oil, etc.*): _____

Rate of Mix Sprayed Per Acre: _____

5. CROP APPLIED TO:

6. TARGET PEST(S):

7. SAFETY EQUIPMENT USED:

8. WEATHER CONDITIONS

Wind Speed: _____

Wind Direction: _____

Temperature: _____

Cloud Cover: _____

UNEXPECTED PROBLEMS Description Of Problem(s) And Corrective Action Taken:

NOTE: Follow directions on the label of the container. **THE LABEL IS THE LAW!**

The following information must be posted on the Worker Protection Standard, Central Area Information Board. It must remain posted for 30 days after REI expires.

Date of Application: _____

Time: _____

Name of Pesticide Used: _____ EPA Registration Number: _____

Active Ingredient: _____

Blocks and/or beds sprayed: _____

Restricted Entry Interval (Hrs): _____ REI End (Date/Time): _____

Worker Protection Standard

PROTECTION

- Protect handlers during handling tasks
- Personal Protective Equipment
- Reduce or eliminate pesticide exposure
- Exclude workers from treated areas

In nurseries this includes the area immediately around the treated area (100 feet or more)

- Exclude workers during the REI

Worker Protection Standard

Mitigation

- Decontamination Sites
 - Water, Soap and Single-Use Towels
 - Eyewash
 - Must be at Mixing Site
- Emergency Assistance
 - Transportation
 - Information regarding any chemical exposure

Worker Protection Standard



Worker Protection Standard

Exception for workers to perform irrigation tasks during the REI

- Worker contact with treated surfaces is minimal and limited to feet, lower legs, hands and forearms
- Pesticide does not have a statement in labeling requiring double notification
- PPE for early entry is provided and conforms to label requirements
- No hand labor activity is performed
- The time in treated area may not exceed 8 hrs. in a 24 hr. period
- Can not enter the area during the first 4 hrs. of the REI

Information on Label & MSDS

Go to www.cdms.net

Labels & MSDS

E.I. du Pont de Nemours and Company

Assure® II Herbicide, EPA Reg No. 00352-00541-00000

Available PDF files for Viewing:

- [Specimen Label, H-64572 SL - 899 102903 10-15-03](#)
- [24\(c\) Registration, MN-000006 H-63926 For Hybrid Poplar Plantings](#)
- [24\(c\) Registration, MN-020005 H-64299 Postemergence Grass Control in Ryegrass Grown for Seed](#)
- [Supplemental Label, HI H-64314 For Use in Control of Annual and Perennial Grasses in Eucalyptus Plantations in HI](#)
- [Supplemental Label, ID, MT, OR, WA, WY H-63727 Non Food/Non Feed Crops Grown For Seed Production](#)
- [Supplemental Label, HI H-63754 Control of Annual and Perennial Grasses in Pineapple](#)
- [Supplemental Label, TX, OK, KS, CO H-63414 Postemergence Grass Control In Fallow](#)
- [Supplemental Label, H-42631 Tank Mixed With Pursuit Herbicide For Soybeans](#)
- [MSDS, M0000093 11-SEP-2003](#)

Get Acrobat Reader

Copyright © 1999-2004,
Crop Data Management Systems, Inc.

5/19/2004

Occupational Safety and Health Administration

- Passed in 1970, administered by the Dept. of Labor
- Its purpose is to reduce workplace hazards and to implement new and improve existing safety and health programs
- All employees are covered except for
 - Self-employed
 - Family operated farms
 - Public workers

Occupational Safety and Health Administration

Establishments that employ 11 or more must keep records and report

- All occupational illnesses
- Injuries resulting in death, or
- One or more lost work days, or
- Restriction of work or motion
- Loss of consciousness, or
- Transfer to another job, or
- Medical treatment (other than first aid)

Record keeping forms must be maintained on a yearly basis and kept at the establishment for 5 years

They must be available for inspection

Occupational Safety and Health Administration

Three forms required

- OSHA 300 - New form replaces 200
Log of Work- Related Injuries and Illnesses
- OSHA 301 – Injury and Illness Incident Report
- OSHA 300A – Summary of Work-Related Injuries and Illnesses This summary is to be posted at the facility from Feb. 1 to March 1

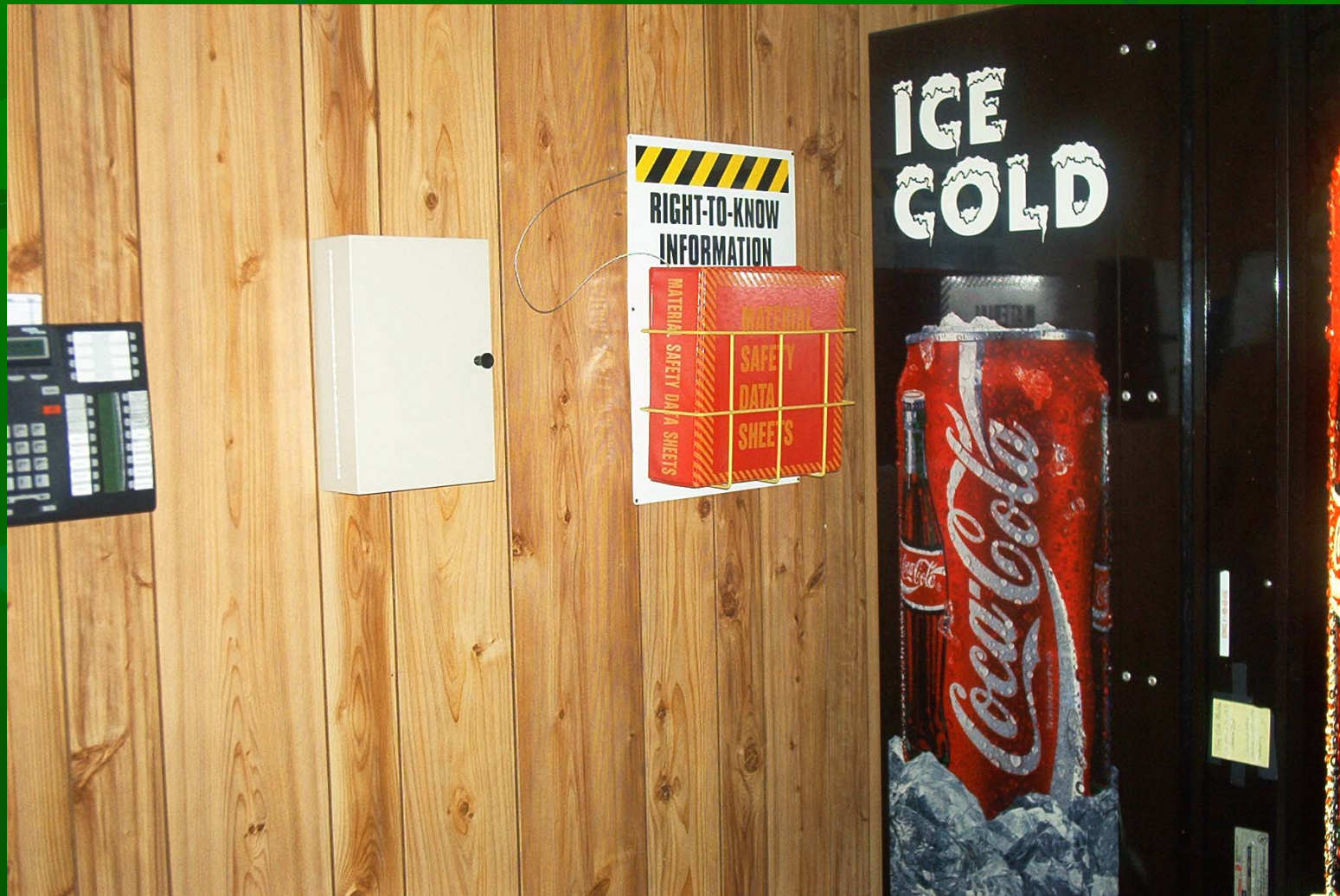
Occupational Safety and Health Administration

Chemical Hazard Communication

■ Employers must:

1. Identify and list hazardous chemicals
2. Obtain MSDS's and labels for each hazardous chemical
3. Develop and implement a written hazard communication program
4. Communicate hazard information to employees through labels, MSDS's and formal training

Material Safety Data Sheets



Material Safety Data Sheets

PRODUCT NAME	MANUFACTURER	CITY & STATE	PHONE NUMBER	DATE OF MSDS ON FILE	DATE UPDATE NEEDED
ATF	Phillips 66 Company	Bartlesville, OK	800-762-0942	5/24/2001	5/24/2006
CARBON DIOXIDE	Holox, Lt.	Norcross, GA	770-925-4640	6/1/2001	6/1/2006
GOAL 2 XL	Rohm & Haas Co.	Philadelphia, PA	215-592-3000	6/1/2001	6/1/2006
MEDALLION	Sygenta Crop Protection,	Greensboro, NC	800-888-8372	7/16/2001	7/16/2006
BRAKE FLUID	Radiator Specialty Co.	Charlotte, NC	704-377-6555	8/1/2001	8/1/2006
MOTOR OIL	Phillips 66 Company	Bartlesville, OK	800-762-0942	10/29/2001	10/29/2006
PERMIT	Monsanto Co.	St. Louis, MO	800-332-3111	10/29/2001	10/29/2006
AMINE 4 - 2,4-D	Agrilience, LLC	St. Paul, MN	800-232-3639	11/9/2001	11/9/2006
CHLORONIL 720	Sygenta Crop Protection,	Greensboro, NC	216-357-4100	12/13/2001	12/13/2006
WELDING WIRE	Lincoln Electric Co.	Cleveland, OH	216-481-8100	12/17/2001	12/17/2006
BAR & CHAIN OIL	Phillips 66 Company	Bartlesville, OK	800-762-0942	1/1/2002	1/1/2007
REMEDY	Dow Agro Sciences LLC	Indianapolis, IN	800-258-3033	2/11/2002	2/11/2007
GASOLINE,	ExxonMobil Oil Corp.	Fairfax, VA	800-662-4525	3/1/2002	3/1/2007
MALATHION 57EC	Platte Chemical Co.	Greeley, CO	800-232-3639	4/25/2002	4/25/2007
THIRAM	Gustafson LLC	Plano, TX	972-985-8877	6/1/2002	6/1/2007
PROPANE	Phillips 66 Company	Bartlesville, OK	800-762-0942	6/21/2002	6/21/2007
DIESEL FUEL NO. 2	Phillips 66 Company	Bartlesville, OK	800-762-0942	8/13/2002	8/13/2007

Information on Current Trends and Regulations Related to Pesticides

The Georgia Pest Management Newsletter

Issued monthly by Dr. Paul Guillebeau at UGA

To receive your free e-mail copy send your e-mail
address to: tal@bugs.ent.uga.edu

To view back issues go to:

[http://pubs.caes.uga.edu/caespubs/entomology/pe
stnewsletter/newsarchive.html](http://pubs.caes.uga.edu/caespubs/entomology/pestnewsletter/newsarchive.html)

USDA - Animal and Plant Health Inspection Service

- They have the authority to regulate the interstate shipment of plant material in order to stop the spread of plant diseases and pests
- It is a partnership with state agencies responsible for plant inspection
- Specific organisms are restricted in their transport (SOD)
- If you sell, trade, give away or move plant material across state lines then those plants must be certified pest free

Department of Labor

- Administers the Migrant and Seasonal Worker Protection Act
- Should have the MSPA poster displayed at your work site and planting sites
- MSPA Poster can be found @
[/www.dol.gov/esa/regs/compliance/posters/pdf/mspaenspbw.pdf](http://www.dol.gov/esa/regs/compliance/posters/pdf/mspaenspbw.pdf)

Department of Labor

Other posters that maybe required at your site

- Fair Labor Standards Act (FLSA)
- Family and Medical Leave Act (FMLA)
- Employee Polygraph Protection Act (EPPA)
- Job Safety & Health Protection
- Equal Employment Opportunity Act
- Notice to Workers with Disabilities
- Uniformed Services Employment and Reemployment Act (USERRA)

Occupational Safety and Health Administration

- OSHA is now working on task guidelines for specific industries related to ergonomic hazards
- Nursery industry is one of the targets of this effort
- Need to keep eye out for any proposals related to us

Environmental Protection Agency and US State Department

- Montreal Protocol